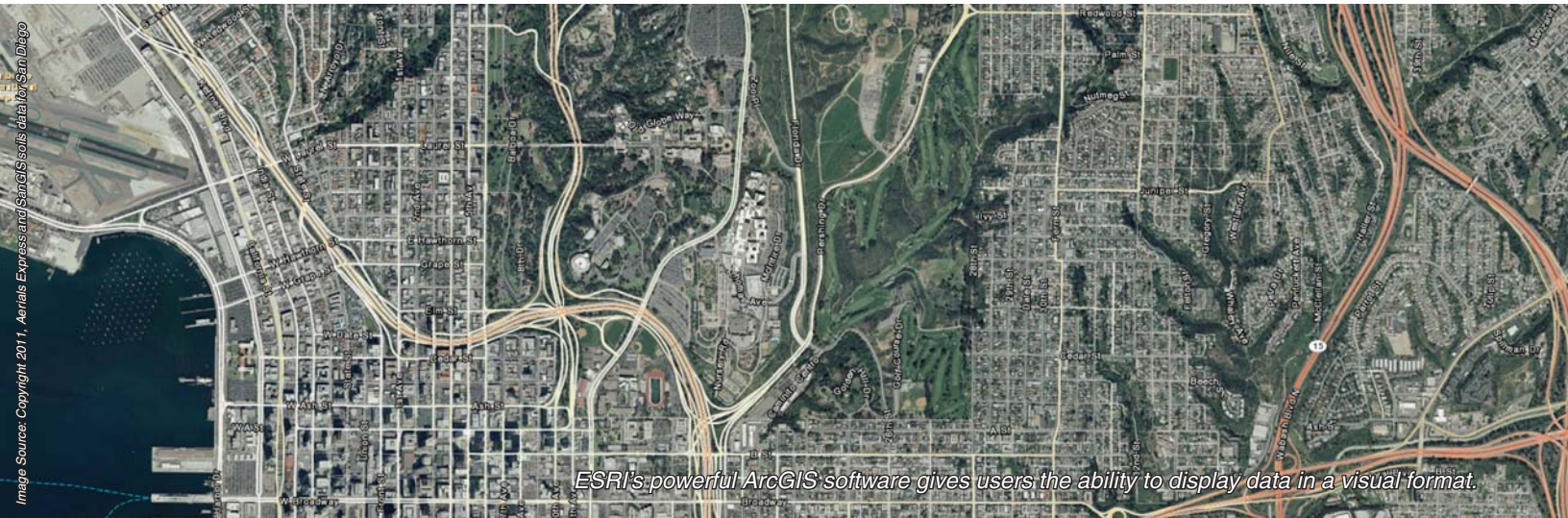




Image Source: Copyright 2011, Aerials Express and SanGIS soils data for San Diego



ESRI's powerful ArcGIS software gives users the ability to display data in a visual format.

KICK START YOUR PROJECT MAP WITH ARCGIS.COM | BY EILEEN D. GOFF

Imagine that you have been given the task of identifying potential impacts to sensitive habitats and species in an area where a new transportation project is planned. Your team will meet to discuss the project approach and to determine which locations are feasible and which are problematic.

Of course, the best way to gather, integrate, visualize, and analyze a diverse collection of information is by using a Geographic Information System (GIS). New GIS tools are now making spatial data increasingly more accessible and easy to use — even for non-GIS staff. One of the most powerful capabilities of today's GIS tools is the ability for teams of people to create, share, and integrate data and maps interactively. Online mapping applications and the supporting capacity for “cloud computing” are changing the ways people design and evaluate environmental solutions.

At <http://www.arcgis.com>, you can view a gallery of ready-made maps or create a new map. You can conduct a search for specific maps and applications, download data packages (for use in ArcGIS and

ArcGIS Explorer software), add content to an existing map, share data with a specified group, or employ combinations of these. Maps and datasets include details about the contents, the data source, and options for using the material.

Now, back to the problem of preparing for your meeting with the planning team. A good source for San Diego County GIS data is SanGIS: <http://www.sangis.org/>. A variety of GIS data can be downloaded (you will need to establish a login to do so). Once registered, click the “View Data List” link and open the Ecology data group. Click the Multiple Species Conservation Program (MSCP) Areas to download this to your computer. Save it as a .zip file in a folder (such as GIS_Data), but do not unzip it.

Next, build your map. Open arcgis.com and, in the upper right Search box, type soils. The USDA Soil Survey Geographic (SSURGO) Database will be listed. Click the small arrow next to the Open link and, from the list choose “Open in ArcGIS Explorer Online” to open the SSURGO map. Zoom in to see map details. To make this data slightly transparent so

IN THIS ISSUE

- 1 **Kick Start Your Project Map with ArcGIS.com**
by Eileen D. Goff
- 3 **Message from the Board: Remembering Bill Schwartz**
by the San Diego Chapter Board
- 4 **Meet A Member: 2011 Scholarship Winners**
- 5 **2011 Annual Awards a Success**
by Corinne Lytle Bonine
- 6 **Snapshots From 2011 AEP San Diego Awards**
- 8 **Climate Adaptation and Food Security**
by Chandra Krout, Ellen Fehr, and Dennis Larson
- 9 **San Diego Hosts Fall CEQA Basics Workshop**
by Julie Wang
- 9 **Photo of the Month**
- 10 **November Announcements**
- 12 **Campus Connection**

KICK START YOUR PROJECT MAP WITH ARCGIS.COM | CONTINUED

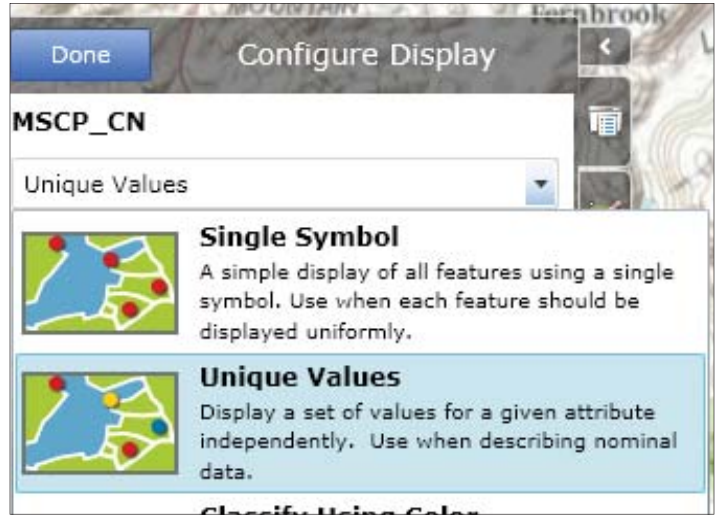
that we can view the topography basemap underneath, click the Layers button in the upper left menu (hover your mouse to get a definition of any of these tools). In the layers list, click the Soil_Survey_Map arrow to open the layer details. Set the slider Opacity bar to enable viewing both the topography and the soils layer (you can hide this menu bar again when finished).

Add your downloaded data to the soils map. In the upper Mapping menu, click the Add Content button (hover your mouse to see tool definitions). Click the Import option and then choose Shapefile. Browse to and open the zipped MSCP shapefile. In the Import Shapefile window that opens, choose to “Keep original features”.

Once you have added data to the map, you can set preferred layer symbols via a Layer’s Details option and using the Display Configure tool. For example, rather than a “Single Symbol”, create “Unique Values” for each MSCP class (see graphic) based on the Attribute value “Description”. Many more ideas for polishing your map are available from the Help menu (see upper right corner of the map window).

You could also return to the SanGIS site for more data layers such as rivers or county parks, and repeat the above process.

In just 15 minutes or less, you now have the beginnings of a map for your planning meeting. If you created a login to ArcGIS.com, you could also save this map to the website and share it with others in your group (group members also need an active account with ArcGIS.com). Group members could add additional data layers or bookmark new locations of interest. Prior to your meeting, everyone



This screenshot depicts configuring an online map with ESRI’s website Arcgis.com.

in your group would already be familiar with the project area.

Eileen Goff is the owner of Geomorph Information Systems., LLC (GeomorphIS), teaches ESRI-certified ArcGIS training courses, and is adjunct faculty at the San Diego Mesa College’s GIS Department.

SMA

Sophia Hahl Mitchell, LEED AP BD+C
Owner | Principal

Sophia Mitchell & Associates
tel: 858.243.0843 sophia@mitchellplanning.net
fax: 858.244.7920 www.mitchellplanning.net

amec Earth & Environmental

- Environmental and Conservation Planning
- Water Resources Planning
- Regulatory Permit Assistance
- Aquatic and Terrestrial Surveys/Reports
- Geospatial Analysis and Mapping
- Habitat Creation and Restoration
- Environmental Remediation
- Geotechnical and Civil Engineering
- Sediment Studies

Southern California Locations
9210 Sky Park Court, Suite 200
San Diego, CA 92123
(858) 300-4300
Newport Beach, CA
(949) 642-0245
Riverside, CA
(951) 369-8060
Santa Barbara, CA
(805) 962-0992

http://www.amec.com/earthandenvironmental

LSA

ENVIRONMENTAL
SERVICES
PLANNING
DESIGN

MIKE TROTTA
PRINCIPAL
LSA ASSOCIATES, INC.
703 PALOMAR AIRPORT ROAD,
SUITE 260
CARLSBAD, CA. 92009
760.931.5471
mike.trotta@lsa-assoc.com



MESSAGE FROM THE BOARD: REMEMBERING BILL SCHWARTZ (1941-2011)

It is with tremendous sorrow that the AEP San Diego Chapter Board acknowledges the loss of our friend and colleague, Bill Schwartz.

Many of us had the pleasure of working with Bill, either on private projects or at AEP events. His humble presence, his extensive knowledge of land use and environmental law, and his quirky but infectious humor will be greatly missed.

Bill is remembered as a long-time and valued member of our chapter. Before the state-led CEQA workshops, Bill provided annual updates to members at the January luncheon, attracting a large attendance from agencies, private firms, and law firms.

Just a few years ago, Bill revived his active role by generously donating his time to lead our fall CEQA workshops. This year, he declined due to health reasons. Yet even those closest to him were stunned to learn of his unexpected death due to heart



firm Schwartz Heidel Sullivan, LLP. Bill's vast expertise with land use, environmental, and public agency issues put him in high demand. But those who have worked with him know that his integrity and professionalism are what made him so popular among clients, consultants, agency staff, attorneys, and judges alike.

If we had a nickel for every time someone said they were glad Bill was sitting across the table on any given project or issue... well, then we would have an appreciable amount of money without a fraction of the integrity Bill had.

On October 31, Bill's favorite holiday, a memorial was held at the County

failure last month. of San Diego Planning Commission hearing room where family, friends, coworkers, and colleagues took time to remember Bill.

William J. Schwartz, Jr. was managing partner of the San Diego law firm Schwartz Heidel Sullivan, LLP. There was no shortage of genuine laughter, stifled tears, and heartfelt stories as memories were shared. One recurring theme in particular was Bill's unwavering propensity to treat everyone he encountered with utmost respect and consideration.

Bill is survived by his wife Kathy, children Carrie, Luke, and Chris, grandchildren Will and Lorelei, as well as his brother Thomas.

We send our deepest condolences to them during this very difficult time.

To read more about Bill's life and where donations can be made in his name, visit his online obituary: <http://tinyurl.com/3t5sj83>.

Bill will be sorely missed and not soon forgotten.

The editors of The Environmentor are now accepting environmental photographs for publication. Please send in your own photo — landscape scene, plant or animal species, or other environmentally related photograph. Please send your photographs to Lisa Lind, Newsletter Editor: sdaepnews@gmail.com

**LINSCOTT
LAW &
GREENSPAN**
engineers

Traffic isn't pretty, but for more than 40 years we've made it work better.

Traffic • Transportation • Parking

Pasadena 626.796.2322 **Costa Mesa** 714.641.1587 **San Diego** 858.300.8800

www.lgengineers.com

GeomorphIS

GIS Services and Solutions
Environmental Planning
Natural Resources Assessment
ESRI Authorized ArcGIS Training
Spatial Analyses and Database Design
Hydrological and Ecological Studies

Tel: 619.218.6463
info@GeomorphIS.com
www.GeomorphIS.com

**A HUBZone, DBE, Woman Owned Business
CPUC-Certified WBE**



MEET A MEMBER: 2011 SCHOLARSHIP WINNERS

At the 2011 Annual Awards Event, three students were recognized for their academic achievements and aspirations in the environmental field.

Along with their scholarship, recipients receive a one-year membership to AEP. Below are excerpts from their winning applications.

Jared Castro
UCSD, Environmental Systems

Historically, the Armed Forces have had a negative reputation as ecological stewards. However, I believe that this perspective is gradually changing as government agencies cooperate to minimize environmental impacts and exploit opportunities for preservation of wildlife.

In addition to the pristine reefs in Okinawa and the sea lion refuge on Point Mugu Naval Air Station, other examples include thriving bird colonies on restricted San Nicholas Island and the success of a bison herd on Camp Pendleton Marine Base.

It is my intention to be a part of the coevolution of military bases and environmental programs. I wish to help improve the public's perception of the military as environmental stewards and to prepare the military to be a leader in sustainability and conservation, both of which will be necessary to meet the country's resource needs in the future.



The scholarship winners at the 2011 AEP Awards Ceremony.

Katherine Godfrey
USD, Environmental Studies and Chemistry

I've always been intrigued by environmental protection and realized that an environmentally focused career could capture my interests in creating a positive impact on surrounding communities and facilitating the right kind of community development.

I want to focus on specific problems such as sustainable food sources while maintaining nutritional benefits. Also, the growing importance and controversy stemming from the need for renewable energy sources captivates me, and I see a wide variety of benefits developing from further research on both a large and small scale. After graduation, I can't wait to begin leaving my footprint on the path towards a sustainable culture, and actualization of so many of my goals.

Jaime Speed Rossiter
SDSU/UCSB, Geography

My primary area of interest is the intersection of environmental and conservation policy with environmental perceptions and social attitudes. For my Master's thesis I explored this relationship as it pertains to the MSCP in San Diego County. For my doctoral research, I hope to examine land use, land cover, and land management change in San Diego County since the MSCP was implemented in order to understand if the perceptions of different stakeholder groups are reflective of how MSCP has affected the area.

I feel honored and privileged to be pursuing a career path that I hope will have real, positive effects on environmental outcomes, as my life and worldview have been so shaped by the environmental problems I witnessed growing up and as a student.



2011 ANNUAL AWARDS A SUCCESS | BY CORINNE LYTLE BONINE, CO-CHAIR

The San Diego Chapter Awards and Scholarship program was held on October 20 at Tom Ham's Lighthouse. Nearly 200 attendees enjoyed a cocktail mixer overlooking the ocean and downtown skyline, appetizers and buffet using sustainable and responsibly-harvested seafood, as well as rubbing elbows (literally) with each other due to the record-breaking attendance and the crisp fall weather keeping guests inside.

Guest speakers Jerry Schaefer and Dave Marshall delighted the audience detailing the restoration efforts of Casa Bandini through stories and pictures. Because of overwhelming sponsor and attendee support of this year's event, the program increased the number of student scholarships and awarded three in total. Jared Castro, Katherine Godfrey, and Jaime Speed Rossiter were the 2011 scholarship recipients. After the scholarships were awarded, the Contribution to the Environmental Profession award was presented to Paul Amberg (Dudek) and Diana Richardson (SDSU).

All this led up to the evening's main event, which celebrated and recognized the outstanding achievements of local agencies, firms, and professionals. Despite receiving nominations of impressive quality and quantity, the volunteer jurors were able to select a pool of excellent finalists, and ultimately, winners. Attendees were also asked to vote on the many beautiful photographs displayed at the event.

A photo of Mayan ruins of Tulum submitted by Jamie Le Dent was the winner (view Jamie's winning submission in the Photo of the



Diana Richardson (right), posing with AEP President Julie Wang, received the Contribution to the Environmental Profession award.

Month section.) In closing, lucky attendees walked away with some fabulous raffle packages, surprise raffle items, and living centerpieces.

The Event Committee would like to give tremendous thanks to our guest speakers Jerry Schaefer and Dave

Marshall, presenters Julie Wang, Brian Mooney, Bruce McIntyre, and Marilyn Pongeggi, sponsors, jurors, merchant donors, student volunteers and everyone who attended the event.

Corinne Lytle Bonine is an associate planner at CH2M HILL and co-chair for the 2011 San Diego AEP Awards Event Committee.



North Embarcadero Visionary Plan EIR



Metro Career Center & Metro Villas



Lafayette Hotel & Residences - Visual Simulation

Serving San Diego for Over 30 Years

- CEQA/NEPA Compliance
- Regulatory Permitting & Monitoring
- Land Use Planning & Entitlement
- Redevelopment
- GIS & CADD
- Visual Simulations

BRG Consulting, Inc.

304 Ivy Street
San Diego, CA 92101
619-298-7127-t
619-298-0146-f
brginc@brginc.net
www.brgconsulting.com





SNAPSHOTS FROM THE 2011 AEP SAN DIEGO AWARDS

2011 AWARD WINNERS

Congratulations to the outstanding award recipients!

Technical Report: RECON Environmental, Inc.: Air Quality and Health Risk Technical Analyses for the Grossmont Hospital Improvements Project; and San Diego Unified Port District, San Diego County Regional Airport Authority and CH2M HILL: Ryan Aeronautical Company Historic American Buildings Survey (HABS) Report and Interpretive Display

Environmental Analysis Document: CH2M HILL, Caltrans District 11, and SANDAG: State Route 15 Mid-City Bus Rapid Transit Project MND/EA

Environmental Analysis Document: County of San Diego and RECON Environmental, Inc.: Tiered Winery Ordinance Amendment EIR

Planning Document: City of Chula Vista: Historic Preservation Program and Ordinance

Environmental Resource Document: ICF Jones and Stokes: Visual Resources Report Energia Sierra Juarez U.S. Transmission LLC Generation-Tie Line Project

Contribution to the Environmental Profession: Paul Amberg, DUDEK and Diana Richardson, SDSU



The 2011 Awards Committee includes: Corinne Lytle Bonine, Co-Chair - CH2M HILL, Becky Malone, Co-Chair - ESA, Vanessa Arent - ESA, Sarah Champion - URS, Emily Gardner - USD Student, Alex Higgins - AMEC, Bunni Hollis - GE Permit, Kim Jones - Groundwork-San Diego, Dana Martinez - Redevelopment Agency, Chris Mendiara - LLG Engineers, Chris Terzich - SDG&E, and Seth Torma - KOA. A special thanks to Shankar Ramakrishnan with LLG Engineers for taking photos during the awards.

KOA CORPORATION
PLANNING & ENGINEERING

Congratulations Long Beach for making the **Top 25** list of bicycle friendly cities.

To find out more go to: www.koacorporation.com or call (619) 683-2933

Krout Associates
Sustainability Consulting

Chandra K. Krout, PRINCIPAL
AICP, LEED AP (BD+C/O&M), CGBP, GPR

619 316 7645
chandrakrout@kroutandassociates.com
2321 Lincoln Avenue | San Diego, California 92104



SNAPSHOTS FROM THE 2011 AEP SAN DIEGO AWARDS

2011 AWARDS SPONSORS

This year over \$15,000 was donated for the awards event and scholarship fund. Thank you to our generous sponsors who helped make the 2011 Awards and the chapter's scholarship fund a success!

John D. Spreckles (\$1200)

- Atkins Global
- AMEC
- CH2M HILL
- HELIX Environmental Planning
- RECON
- URS

Alonzo E. Horton (\$600)

- AECOM
- AES/Mooney Planning
- ASM Associates
- BRG Consulting
- DUDEK
- ESA
- KP Environmental LLP
- LSA Associates, Inc.
- RBF Consulting
- SDG&E

Babcock & Story (\$300)

- Chambers Group , Inc.
- ICF International
- KOA Corporation
- LLG Engineers
- Ninyo & Moore
- Worden Williams

2011 Merchant Donors: Tio Leo's, Burger Lounge, Hooley's Irish Pub, Body Beautiful Car Wash, Casa de Pico, San Diego Museum of Art, Quail Botanical Gardens, San Diego Natural History Museum, Orfila Winery, Donovan's Steakhouse, Fred Astaire Dance Studio, Omni Hotel, Sprinkles Cupcakes, Scripps Birch Aquarium, Sea World, Highlander Men's Stores, San Diego Chargers, Seu's Restaurant, Holiday Inn at the Stadium, San Diego Maritime Museum, San Diego Harbor Hornblower Cruises, Reuben H. Fleet Science Center, San Diego Zoo, Legoland California, Karl Strauss Brewery



Thank you to the 2011 Awards Jury:
Charly Bull - RECON, Bruce Goff - GeomorphIS, Nancy Lytle - SEDC, Michael D'Alessandro - David Evans Associates, Angela Leiba - URS Corporation, Kristen Walker Potente - URS Corporation, Lisa Coburn-Boyd - Otay Water District, Lisa Capper - HELIX Environmental Planning, Ryan Birdseye - Kimley-Horn, Karen Ruggels - KLR Planning, Joe O'Bannon - The Chambers Group, Bobbi Herdes - RECON, Kelly Ross - ESA



CLIMATE ADAPTATION, FOOD SECURITY: SOWING OUR OATS NOW | BY CHANDRA KROUT, ELLEN FEHR AND DENNIS LARSON

With the global population expected to reach nine billion by 2050, food security and climate adaptation go hand in hand. The agriculture industry is already experiencing the impacts of temperature variations, desertification, and increased drought on crop yield. To ensure future sustainability and maintain security, the agriculture industry requires proactive adaptation measures.

Within the U.S., California has the highest revenue from cash farm receipts amounting to \$34.8 billion annually. Significantly, California produces nearly half of all fruits, nuts, and vegetables sold in the U.S.¹ In 2009, cash receipts for California's top three agricultural commodities—milk, almonds, and grapes—equaled \$10.1 billion, or nearly one-third of California's total agricultural revenue. As the world's fifth largest supplier of agricultural commodities, California agriculture requires a strategy to mitigate the changing climate.

California agriculture is facing rising utility rates, increase in the severity and frequency of heat waves, and diminishing water supplies. Variations in temperature determine the yield and quality of California's leading commodities.² Conservative climate change models expect a two degree Fahrenheit increase by 2040. Both grapes and almonds require a specific number of hours of cool temperature, or "chill hours" to properly develop. This rise is forecasted to eliminate 50 percent of California land that is suitable to premium wine cultivation.² As temperatures move outside the required range, losses in grape and almond production are estimated at \$3.3 billion annually.²

Sustainability in California agriculture is synonymous with economic viability. Best management practices are essential to reduce the magnitude of future economic losses. California farmers should focus on crops and livestock that are adaptive to a wide range of climate conditions, rather than species that do well only in a narrow environmental range.³ This includes breeding cultivars that are more tolerant to the changing climate and altering the timing of planting to account for the shift in temperature cycles.

Government-business partnerships are required to protect California agriculture from invasive species and control insect outbreaks. Investments in irrigation should be increased, with precautions taken not to spend money in areas where water resources may become unobtainable. Overall, the agricultural sector must promote reduction of GHG emissions in production, including monitoring

the methane emissions from cattle and reducing agricultural wastes. As illustrated, the ability to manage climate change in California will have impacts ranging from local economic prosperity to global food security.

Chandra Krout and Ellen Fehr are with Krout & Associates and Dennis Larson is with AECOM.

Citations : ¹California Agricultural Resource Directory 2010-2011. Rep. Sacramento: California Department of Food and Agriculture, 2011.

²Zubryd, Sascha. *Global Warming Could Significantly Alter the U.S. Premium Wine Industry within 30 Years, Say Stanford Scientists.* Rep. Palo Alto: Woods Institute for the Environment at Stanford University, 2011.

³Nelson, Gerald C., Mark W. Rosegrant, Jawoo Koo, Richard Robertson, Timothy Sulser, Tingju Zhu, Claudia Ringler, Siwa Msangi, Amanda Palazzo, Miroslav Batka, Marilia Magalhaes, Rowena Santos, Mandy Ewing, and David Lee. *Climate Change: Impact on Agriculture and Costs of Adaptation.* Rep. Washington, D.C.: International Food Policy Research Institute, 2009.

RECON
A Company of Specialists

RESPECT
INTEGRITY
TRUST

Since 1972

reconenvironmental.com | facebook.com/RECONenvironmental | twitter.com/reconenv



SAN DIEGO HOSTS FALL CEQA BASICS WORKSHOP | BY JULIE WANG

On October 27, AEP returned to the Marina Village Conference Center for the Fall CEQA Basics Workshop. This full-day workshop was well attended by 44 professionals from both the public and private sector and students. Panelists for the workshop included a balanced representation from agencies, legal services, and consultants with Mindy Fogg, Land Use/Environmental Planner and Biologist from the County of San Diego, Suzanne Varco, managing partner of Opper & Varco, LLP, and Lori Spar, Senior Environmental Analyst at RECON Environmental.

The workshop included an introduction to CEQA and the CEQA process. The panelists presented the different types of CEQA documents as well as similarities and differences between CEQA and NEPA. The attendees raised a number of great questions for the panelists brought on by their own current project experience, which made for an engaging and dynamic workshop.

A few of the take-home messages from the panelists included the importance of substantial evidence and

fulfilling due diligence in the research, data analysis, and documentation; the application of the fair argument standard; and how to ensure and enforce solid mitigation and monitoring requirements.

The workshop also included interactive exercises for the attendees to apply their newfound knowledge by answering selected questions from the Initial Study Checklist for a hypothetical project. This exercise allowed the workshop participants to breakout into groups before coming back for a final discussion with the panelists.

Thank you to the panelists Mindy, Suzanne, and Lori for providing a lot of great insight and perspective from their personal project experiences to make this an exceptionally informative and lively workshop. Thank you to our Chapter Director, Marilyn Pongeggi, for organizing and coordinating the event with such success.

Julie Wang is a Project Manager at CH2M HILL and president of the San Diego Chapter of AEP.

PHOTO OF THE MONTH

Mayan ruins of Tulum on the eastern coast of the Yucatan Peninsula on the Caribbean Sea (Award Winner at the 2011 Annual Awards Event)

By Jamie Le Dent

Jamie is an associate environmental planner at Caltrans District 11 and a semi-professional photographer.



Copyright 2011, Jamie Le Dent



MEMBER ANNOUNCEMENTS

AEP SAN DIEGO BOARD VOTING OPEN THROUGH DECEMBER 2, 2011

Voting for 2012 positions on the Board of Directors for the San Diego Chapter of AEP is open. Voting will be held online until December 2. A description for each Chapter position is posted on the chapter website at <http://www.sandiegoaep.org/members.html>. Please contact Seth Torma, Secretary, at storma@koacorp.com, if you have any questions.

CALL FOR NOMINATIONS FOR 2012 STATE AEP AWARDS

With the local awards event behind us, we look forward to the state competition. Nominations are currently being accepted for the 2012 AEP Awards Program. The deadline to submit a nomination is January 31, 2012. For detailed descriptions of each award category as well as detailed requirements for submitting a nomination, please visit <http://www.sandiegoaep.org/events.html>.

SAN DIEGO CHAPTER FLASHBACK PHOTOS ON AEP FACEBOOK PAGE

Special thanks to Troy Murphree, San Diego Chapter member, who has uncovered some fun AEP photos from the '90s. We have scanned and posted these photos to our AEP Facebook page. For those of you who are active on Facebook, we hope you will get connected with us (<http://www.facebook.com/groups/281505741272/>). For those who may need some help getting started, our Social Networking Chairperson, Sophia Mitchell, will be happy to walk you through the steps to set up a Facebook account over the phone. You can contact Sophia at: sophia@mitchellplanning.net or (858) 712-8328.

The San Diego Chapter also maintains a LinkedIn group (<http://www.linkedin.com/groups?gid=2003459>). Join our group to connect with your colleagues, share industry information and to stay up to date on chapter happenings.

SAN DIEGO CHAPTER NEWSLETTER COMMITTEE

Executive Editor

Lisa Lind
RECON Environmental, Inc.

Writer/Contributor

Marlene Wendel
TRS Consultants

Writer/Contributor

Ryan Birdseye
Kimley-Horn and Associates, Inc.

Writer/Contributor

Michael D'Alessandro
David Evans & Associates, Inc.

Editor

Greg Kazmer
RECON Environmental, Inc.

Editor

Julie Wang
CH2M HILL

Graphic Designers

Chris Nixon
Vince Martinez
RECON Environmental, Inc.

Advertising Rates

Business Card: \$200/year
Quarter Page: \$350/year or \$75/issue
Half Page: \$600/year or \$100/issue
Contact Lisa Lind for advertising at:
sdaepnews@gmail.com
or (619) 308-9333

Visit us at:
www.sandiegoaep.org

The Environmentor is published 11 months a year. Articles and other contributions are due by the 15th of the month and are welcome free of charge, but must be of particular interest to the membership. Preferred format for the submissions is Word via email to the Newsletter Editor at sdaepnews@gmail.com. Free job announcements (approximately 150 words) are published in the newsletter, space permitting, and posted at www.sandiegoaep.org/prospects.html.

Celebrating 20 YEARS

HELIX
Environmental Planning

- CEQA and NEPA Compliance
- Biological Resources
- Landscape Architecture
- Native Habitat Installation and Maintenance
- Geographic Information Systems
- Acoustics and Noise Control
- Air Quality Compliance
- Natural Resources Management
- Regulatory Permitting
- Mitigation Monitoring

7578 El Cajon Boulevard
La Mesa, CA 91942
619.462.1515 tel

www.helixepi.com



THANK YOU TO OUR NEW
AND RETURNING MEMBERS

The San Diego Chapter of AEP has more than 300 active members – thank you to our new and returning members:

- | | | |
|-------------------|-----------------------|-----------------------|
| Brooke Aspinall | Jeremy Gleim | Candice Disney Magnus |
| Kim Baranek | Bruce F. Goff | Austin Melcher |
| Alyssa Beerling | Michael Gonzales | Troy Murphree |
| Timothy Belzman | Elizabeth Goulet | Devon Muto |
| Lisa Bestard | Richard Greenbauer | James Nguyen |
| Vanessa Brice | Bobbi Herdes | Amy Rowland |
| Kimberly Bush | Heidi Hirsh | Gulsum Rustemoglu |
| Tammy Ching | Chris Jacobs | Alexandra Shalosky |
| Peter Clark | John Jacobs | Kenneth Sorenson |
| June Collins | Monica Michelle Kling | Donald Vargas |
| Amanda D'Acquisto | Cara Leone | Ryan Waterman |
| Spencer Gallardo | Rebekah Loveless | Nicole Zambruski |

SAN DIEGO CHAPTER
2011 BOARD

President

Julie Wang
CH2M HILL
julie.wang@ch2m.com

Vice President of Programs

Vanessa Brice
Helix Environmental Planning
VanessaB@helixepi.com

Vice President of Membership

Mindy Fogg
County of San Diego
mindy.fogg@sdcounty.ca.gov

Treasurer

Cara Leone
Linscott, Law & Greenspan, Engineers
leone@llegengineers.com

Secretary

Seth Torma, AICP, PTP
KOA Corporation
satorma@koacorporation.com

Newsletter Editor

Lisa Lind
RECON Environmental
llind@reconenvironmental.com

Student Membership/Outreach

Director

Emily Hart
Dudek
ehart@dudek.com

Chapter Director

Marilyn Pongeggi
City of Chula Vista
marilyn_p@cox.net

Visit us at:

www.sandiegoaep.org

Board Meetings are typically held on the 1st Wednesday of each month. All members are invited to attend. If you would like to attend, please contact the Chapter Secretary, Seth Torma, for more information. Minutes from each meeting are posted on the Chapter website.

~ Save the Date ~

The San Diego Chapters of AEP, APA, and WEC are once again co-hosting our

Annual Holiday Party

What: A chance to mingle, chat, win some fun prizes, and enjoy appetizers (provided) and cocktails at a no-host bar!

When: Thursday, December 8th, 6 - 9 p.m.

Where: Rock Bottom Brewery Gaslamp District
Located at 4th and G Streets (use 4th Street Entrance)

Cost: \$5 for Members / \$10 for Non-members

*This year, bring non-perishable food items to donate to the San Diego Food Bank and receive an extra raffle ticket!**

Please use the link below to RSVP no later than Wednesday, November 23rd.

<http://tinyurl.com/2011holidayrsvp>

If your firm or agency would like to sponsor a raffle prize, please contact Alex Hempton at sdapa.membership@gmail.com.

*Please see <http://sandiegofoodbank.org/fooddrives/most-needed-food-items/> for a list of San Diego Food Bank's most needed items.





CAMPUS CONNECTION



Workshop participants work in teams to organize steps in the CEQA Process. Photo credit: Shannon Frattone

SDSU & AEP HOST CEQA WORKSHOP FOR STUDENTS BY SHANNON FRATTONE, SDSU STUDENT CHAPTER LIAISON

On Saturday October 15, SDSU Geography Department, together with AEP, hosted the 3rd Annual CEQA Workshop for Students. The CEQA Workshop for Students is the first building block for students to understand how CEQA is used and implemented by local and state agencies. The workshop, facilitated by Kent Norton, Director of Environmental Services for LSA & Associates, Inc. and past AEP President, provided a strong foundation for students to develop further CEQA knowledge.

Mr. Norton, who has 34 years of experience as a CEQA/NEPA practitioner for both public agencies and private organizations, focused his presentation on the basics, beginning with a discussion of the historical and political roots of CEQA and moving on through the practical, real-world application of CEQA. Mr. Norton introduced the critical steps in the preparation of and processing of CEQA compliance documents, including public outreach, the determination of significance, and the application of mitigation and mitigation monitoring programs. The presentation was informative and interactive, complete with several friendly competitions, including a human reenactment of the CEQA process flow chart and an exciting game of CEQA Jeopardy. Always a hit!

Mr. Norton concluded his presentation with a discussion on careers in the environmental field and highlighted skills that undergraduate and graduate students need to be marketable in today's economic climate. Overall, the students walked away from the workshop with an understanding of CEQA fundamentals and an overview of the marketable skills to help enhance their resumes.

Many thanks go out to Mr. Norton for taking the time to share his years of knowledge and experience with the students. Another big thank you to Professor Diana Richardson for helping motivate students to attend this workshop and for her coordination with AEP to make this workshop such a success!

Shannon Frattone is an associate environmental planner at AECOM and is the AEP Student Chapter Liaison for SDSU.

DIRECTORY

Student Outreach Director
Emily Hart, Dudek
ehart@dudek.com

SDSU STUDENT CHAPTER Liaison
Shannon Frattone
AECOM
shannon.frattone@aecom.com

Faculty Advisor
Professor
Diana Richardson
Geography Department
drichard@mail.sdsu.edu

Student Leader
Christine Day
dayc8288@gmail.com

UCSD STUDENT CHAPTER Liaison
Position Available

Faculty Advisor
Position Available

Student Chapter Faculty Advisor
Oscar Romo
Tijuana River National
Estuarine Research Reserve
oromo@parks.ca.gov

Student Leader
Robert Felix
rdfelix@ucsd.edu

USD STUDENT CHAPTER Liaison
Sharon Toland
Atkins
sharon.toland@atkinsglobal.com

Faculty Advisor
Professor Sarah Gray
Marine Science
& Environmental Studies
sgray@sandiego.edu

Student Leaders
Emily Gardner
emilygardner-12@sandiego.edu
Sabina Baker
sbaker-12@sandiego.edu

PLNU STUDENT CHAPTER Liaison
Position Available

Faculty Advisor
Professor Dave Cummings
Biology Department
dcumming@pointloma.edu

Student Leader
Position Available